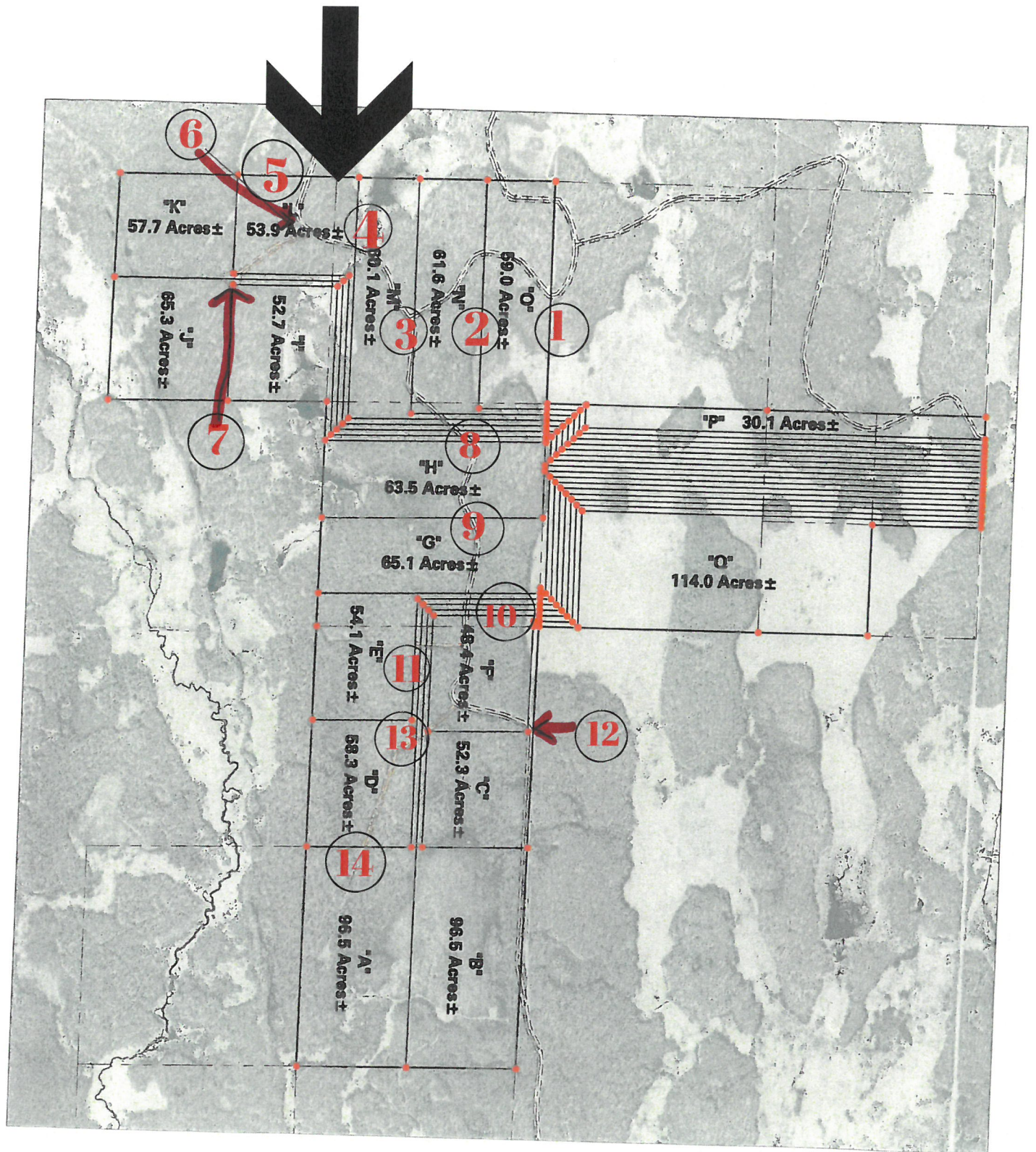


2 NO TRESPASSING SIGNS



WHITE NUMBERS ARE POSTED ALONG THE ROAD

IN THESE LOCATIONS:

17 parcels of hunting land available from 30.1 to 114 acres. Each parcel owns a 66 foot wide strip of land to the public road but are accessed by a series of trails throughout the land with a recorded easement.

- #1: LOCATED ON NORTH LINE OF PARCEL O
- #2: LOCATED ON SOUTH LINE OF PARCEL O, NORTH LINE OF PARCEL N
- #3: LOCATED ON SOUTH LINE OF PARCEL N, NORTH LINE OF PARCEL M
- #4: LOCATED ON SOUTH LINE OF M, NORTH LINE OF L
- #5: LOCATED ON WEST LINE OF L
- #6: LOCATED IN PARCEL L WHERE 2 ROADS COME TOGETHER
- #7: LOCATED IN CORNER OF PARCEL I, J, K, L WHERE THEY ALL MEET
- #8: LOCATED IN WEST LINE OF H
- #9: LOCATED IN EAST LINE OF H, WEST SIDE OF G
- #10: LOCATED IN WEST LINE OF F
- #11: LOCATED IN NORTH LINE OF E
- #12: LOCATED IN NORTH LINE OF WHERE F & C MEET
- #13: LOCATED IN NORTH LINE OF D
- #14: LOCATED IN WEST SIDE OF A, EAST SIDE OF D